

Florida Job Market for Graduates with Bachelor's Degree

(July, 2018)

Hector H. Sandoval

Bureau of Economic and Business Research (BEBR)
and Department of Economics

College of Liberal Arts and Sciences
University of Florida

Employment projections (by occupation)

Employment projections

Information on how the workforce is changing, - which occupation are becoming more common, and which are declining

- These variations are driven by structural changes in the economy, e.g.
 - Increases in demand for particular goods or services,
 - Impact of new technology on labor productivity
- Information on the relative demand for workers in an occupation
 - Accelerating growth may need more new workers than they did in the past
 - Declining occupations may need fewer

US employment projections

- Bureau of Labor Statistics (BLS)
- Most recent: 2016 – 2026 (10 years)
- **Employment:**
 - **2016:** 156 million
 - **2026:** 167.5 million
 - **Increase of 11.5 million**
(Annual average: 1.5 million)

Florida employment projections

- Department of Economic Opportunity (FLDEO)
- Most recent: 2017 – 2024 (8 years)
- **Employment:**
 - **2017:** 9.3 million
 - **2024:** 10.3 million
 - **Increase of 1 million**
(Annual average: 125 thousand)

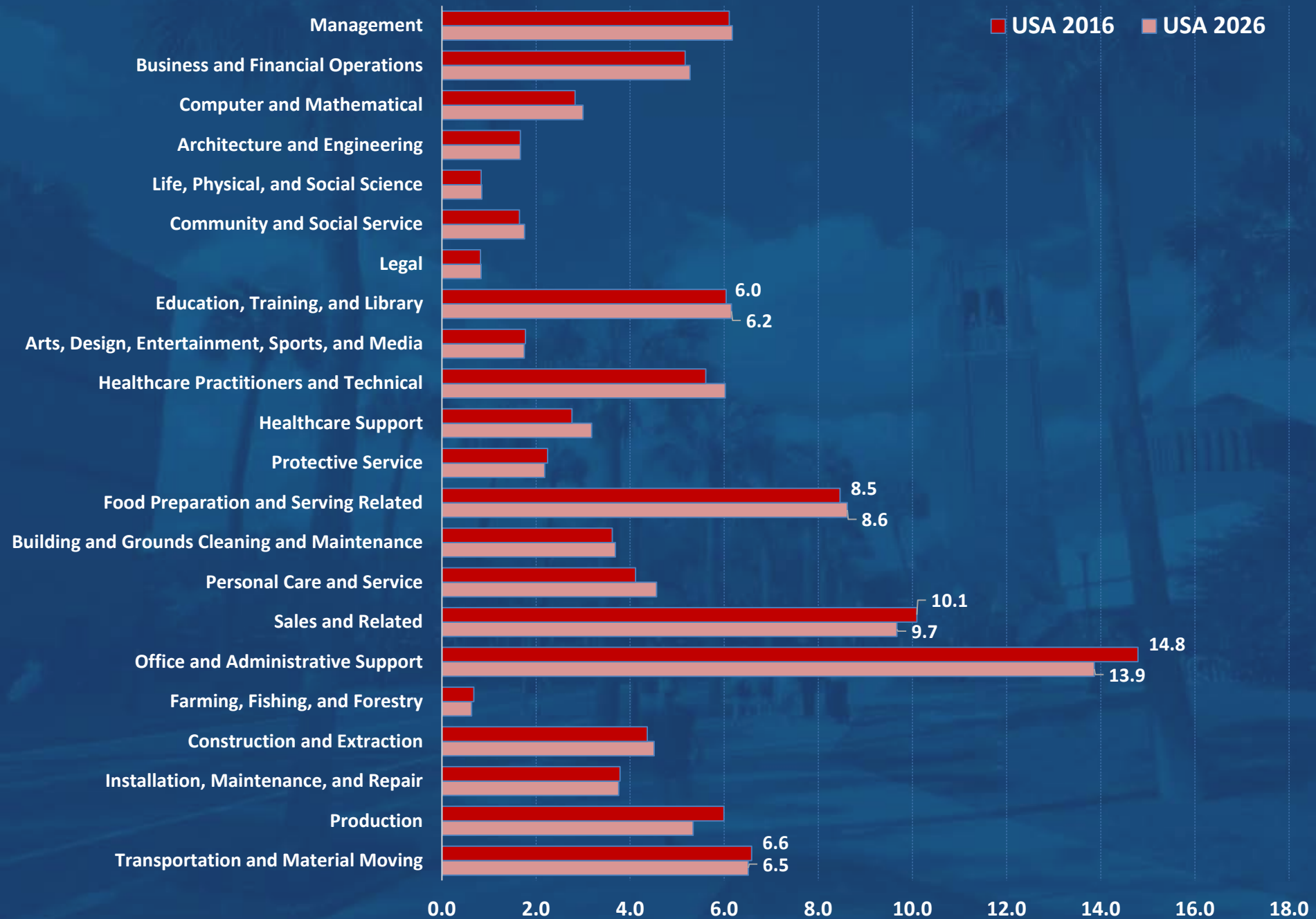
Standard Occupational Classification (SOC) 2010

- 840 detailed occupations
- 97 Minor groups
- 23 Major groups

Occupation by major category			Median Ann. Wage (USA)
SOC	Title	# of Occ.	2017
	Total	840	\$37,690
110000	Management	34	\$102,590
130000	Business and Financial Operations	32	\$67,710
150000	Computer and Mathematical	19	\$84,560
170000	Architecture and Engineering	35	\$79,180
190000	Life, Physical, and Social Science	43	\$64,510
210000	Community and Social Service	18	\$43,840
230000	Legal	9	\$80,080
250000	Education, Training, and Library	63	\$48,740
270000	Arts, Design, Entertainment, Sports, and Media	41	\$48,230
290000	Healthcare Practitioners and Technical	61	\$64,770
310000	Healthcare Support	17	\$28,710
330000	Protective Service	22	\$39,550
350000	Food Preparation and Serving Related	18	\$21,910
370000	Building and Grounds Cleaning and Maintenance	10	\$25,620
390000	Personal Care and Service	33	\$23,610
410000	Sales and Related	22	\$27,020
430000	Office and Administrative Support	56	\$34,740
450000	Farming, Fishing, and Forestry	15	\$24,390
470000	Construction and Extraction	60	\$44,730
490000	Installation, Maintenance, and Repair	52	\$44,520
510000	Production	108	\$33,990
530000	Transportation and Material Moving	52	\$31,600
550000	Military Specific	20	N/A

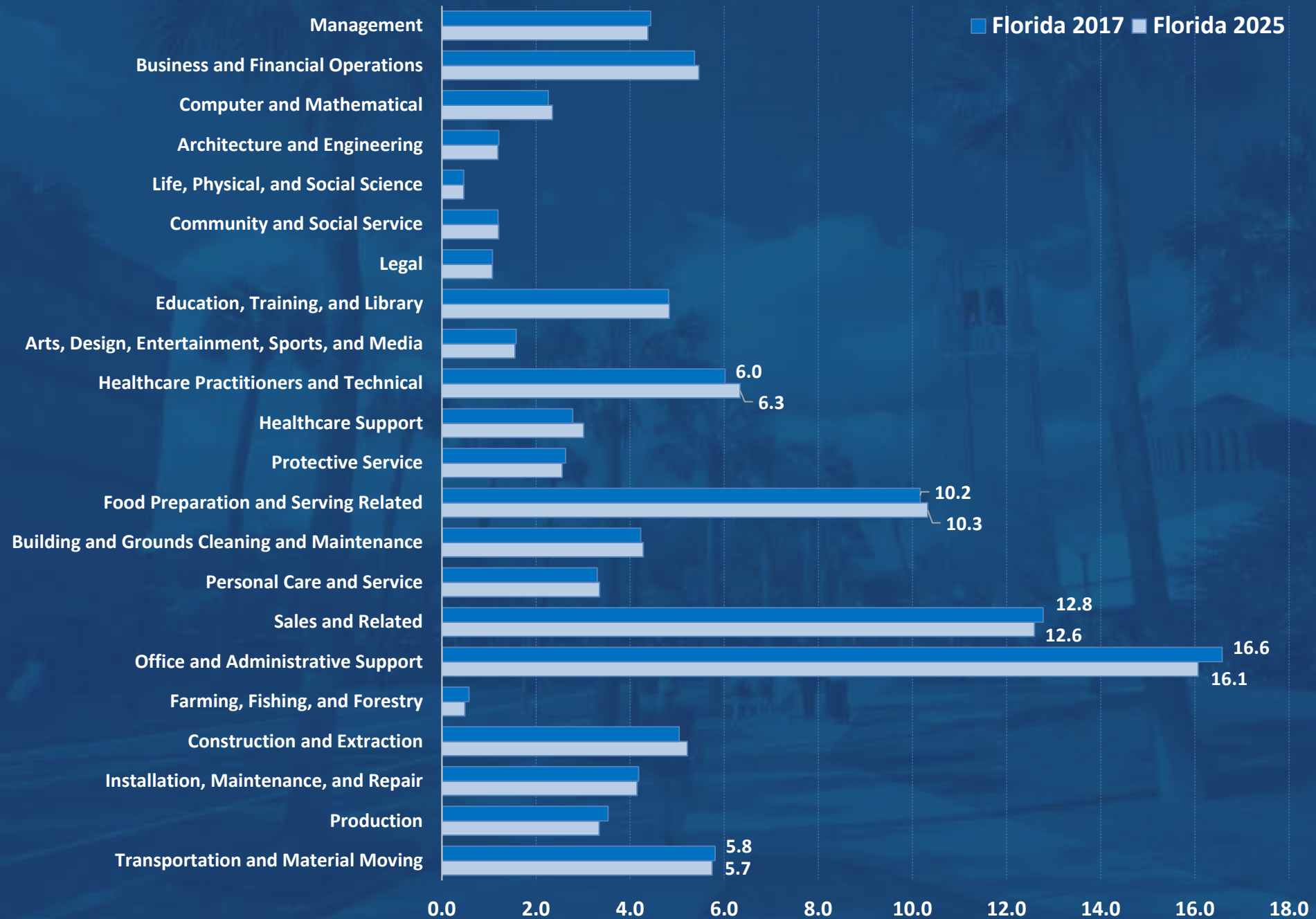
Projected Employment Distribution (USA)

USA 2016 USA 2026



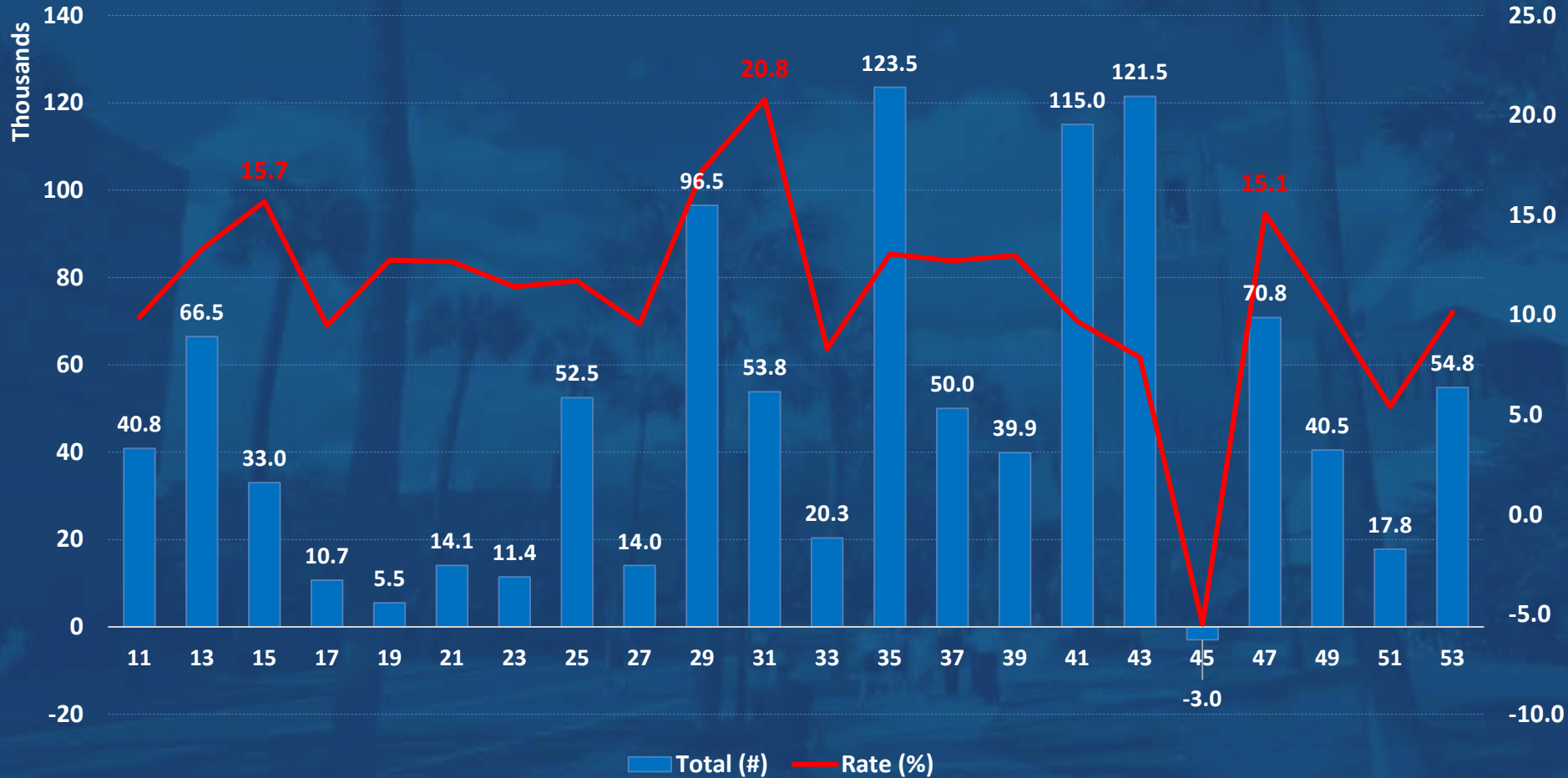
Projected Employment Distribution (Florida)

■ Florida 2017 ■ Florida 2025

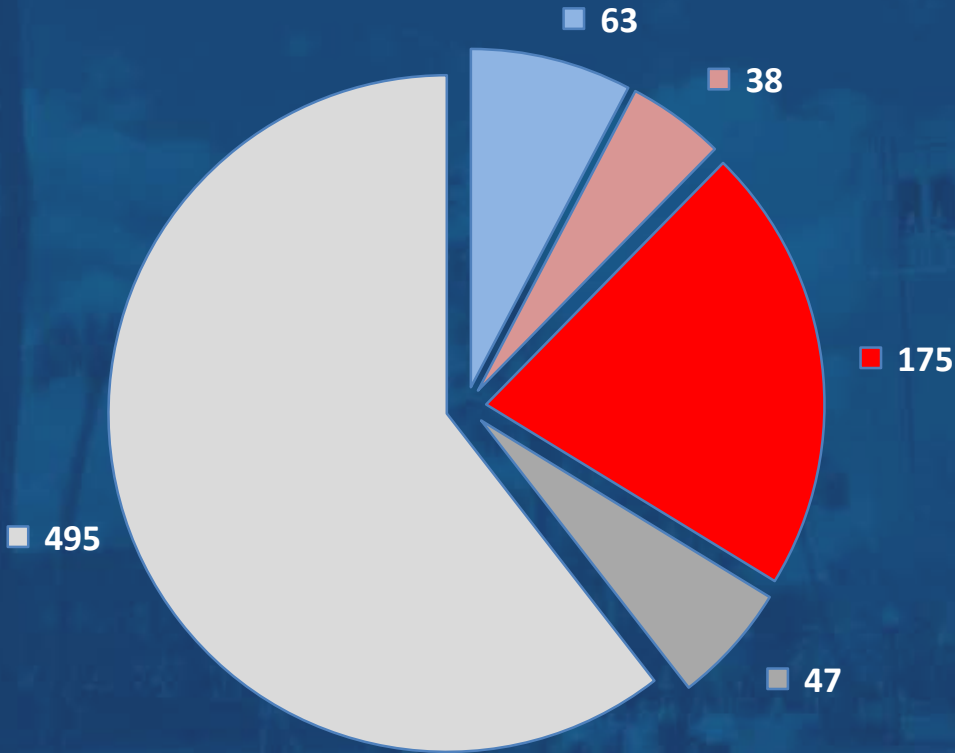


Occupation by major category			Florida					
			Employment (thousands)		Change 2017 - 2025		Distribution (%)	
SOC	Title	# of Occ.	2017	2025	Total (#)	Rate (%)	2017	2025
	Total	840	9,316.2	10,366.2	1,049.9	11.3	100.0	100.0
110000	Management	34	413.2	454.1	40.8	9.9	4.4	4.4
130000	Business and Financial Operations	32	499.9	566.4	66.5	13.3	5.4	5.5
150000	Computer and Mathematical	19	210.7	243.7	33.0	15.7	2.3	2.4
170000	Architecture and Engineering	35	113.1	123.8	10.7	9.5	1.2	1.2
190000	Life, Physical, and Social Science	43	43.1	48.6	5.5	12.7	0.5	0.5
210000	Community and Social Service	18	111.1	125.2	14.1	12.7	1.2	1.2
230000	Legal	9	100.1	111.5	11.4	11.4	1.1	1.1
250000	Education, Training, and Library	63	448.7	501.1	52.5	11.7	4.8	4.8
270000	Arts, Design, Entertainment, Sports, and Media	41	147.0	161.0	14.0	9.5	1.6	1.6
290000	Healthcare Practitioners and Technical	61	560.5	657.0	96.5	17.2	6.0	6.3
310000	Healthcare Support	17	258.8	312.7	53.8	20.8	2.8	3.0
330000	Protective Service	22	244.7	265.1	20.3	8.3	2.6	2.6
350000	Food Preparation and Serving Related	18	946.7	1,070.2	123.5	13.0	10.2	10.3
370000	Building and Grounds Cleaning and Maintenance	10	393.7	443.7	50.0	12.7	4.2	4.3
390000	Personal Care and Service	33	307.5	347.4	39.9	13.0	3.3	3.4
410000	Sales and Related	22	1,190.2	1,305.2	115.0	9.7	12.8	12.6
430000	Office and Administrative Support	56	1,544.5	1,665.9	121.5	7.9	16.6	16.1
450000	Farming, Fishing, and Forestry	15	53.8	50.8	-3.0	-5.5	0.6	0.5
470000	Construction and Extraction	60	469.9	540.8	70.8	15.1	5.0	5.2
490000	Installation, Maintenance, and Repair	52	389.5	430.0	40.5	10.4	4.2	4.1
510000	Production	108	329.0	346.7	17.8	5.4	3.5	3.3
530000	Transportation and Material Moving	52	540.7	595.4	54.8	10.1	5.8	5.7
550000	Military Specific	20	N/A	N/A	N/A	N/A	N/A	N/A

Employment Change 2017 – 2024 (Florida)

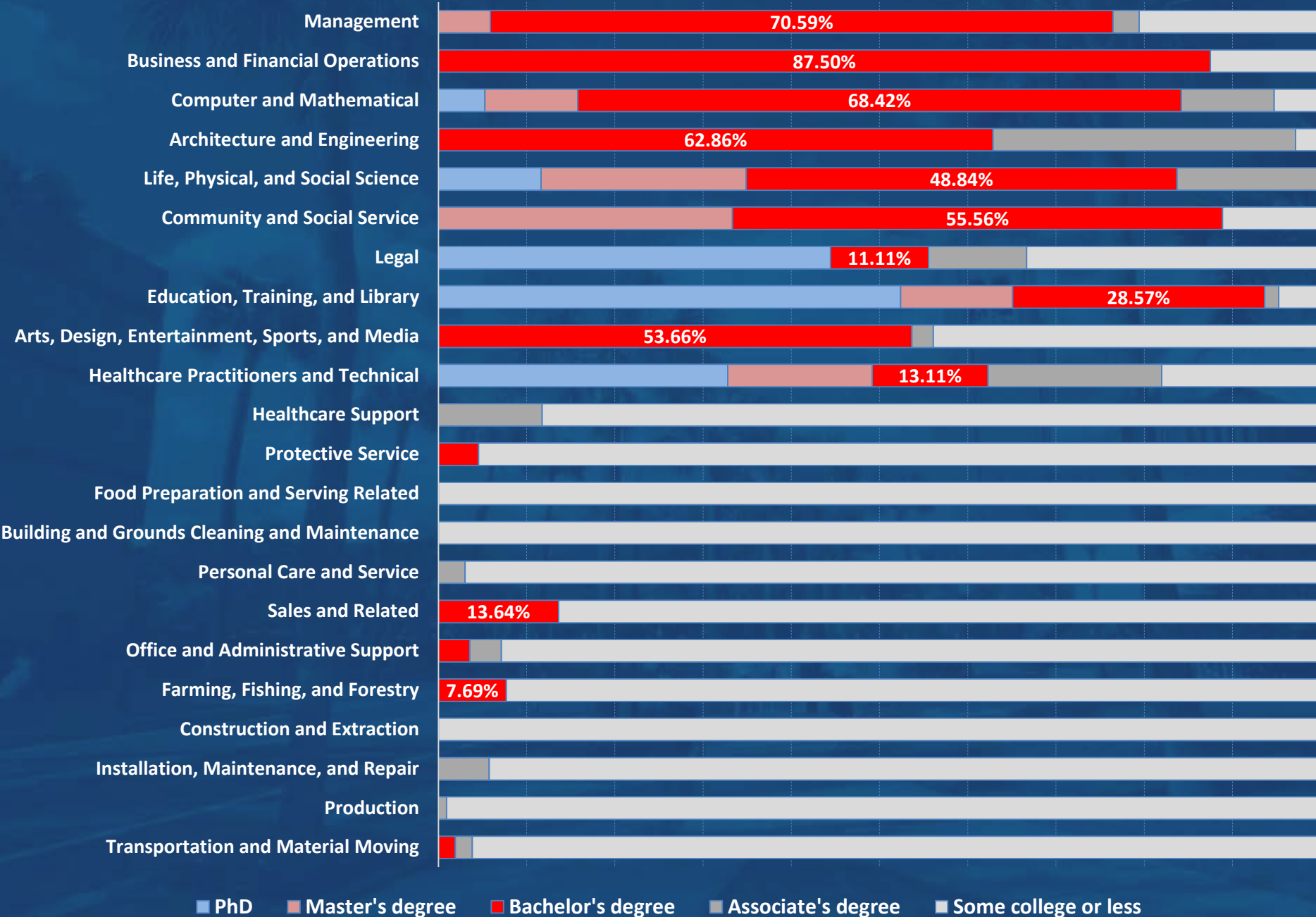


of Occupations by Typical Education Needed for Entry (BLS)



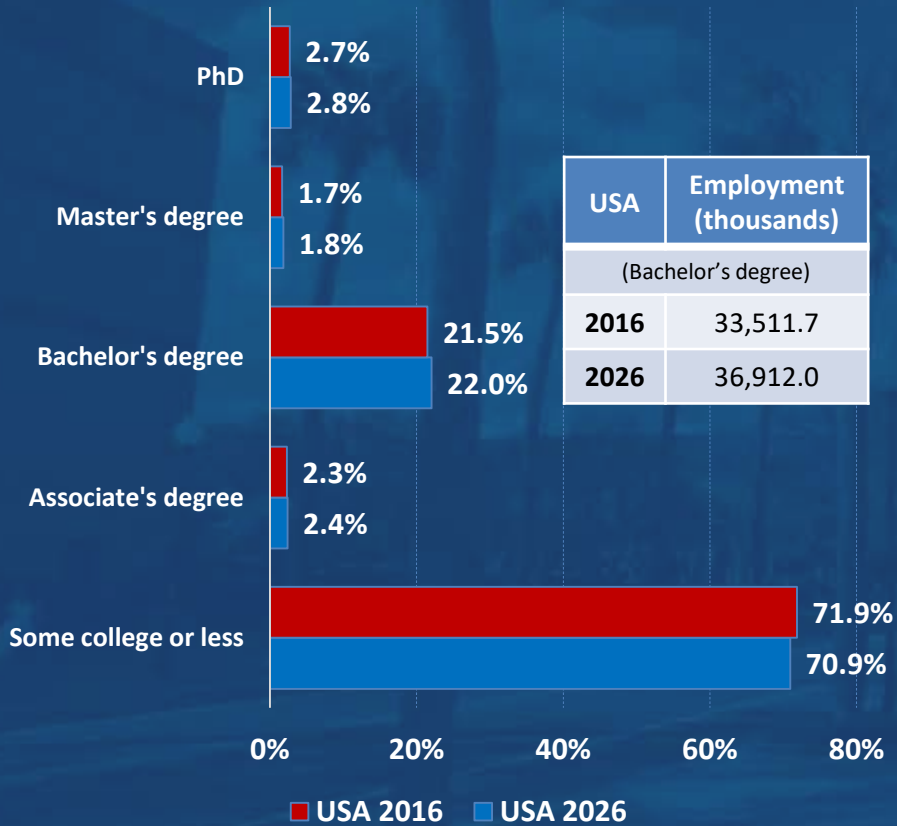
■ PhD ■ Master's degree ■ Bachelor's degree ■ Associate's degree ■ Some college or less

Typical Education Needed for Entry by Occupation (BLS)

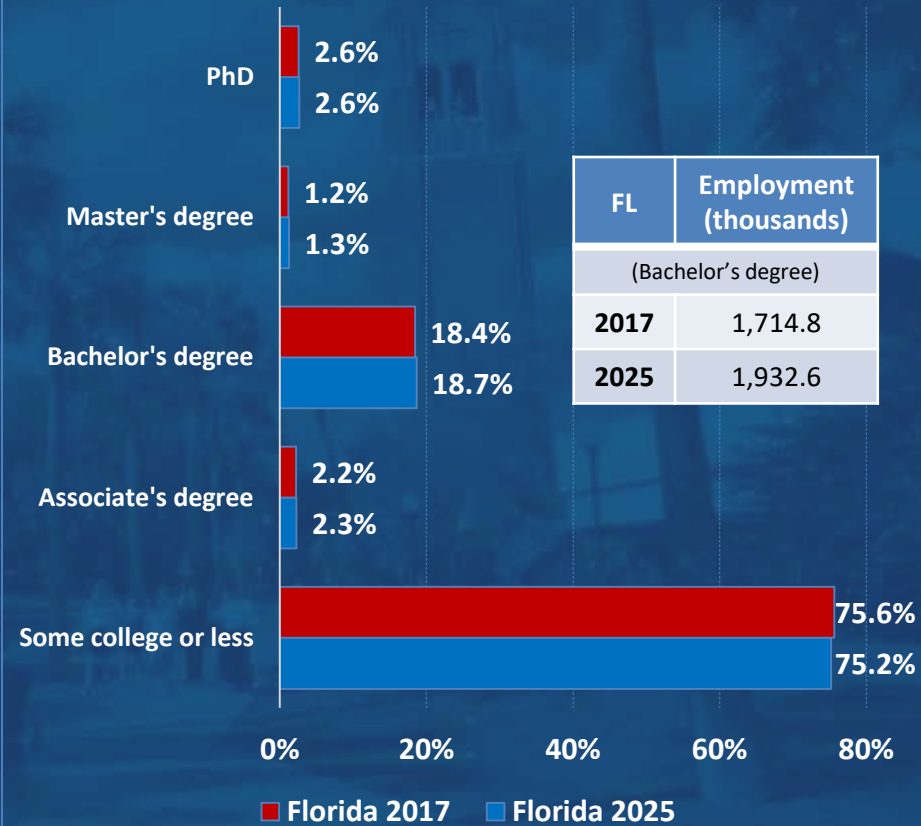


Distribution of Employment by Typical Education Needed for Entry

Employment Distribution (USA)



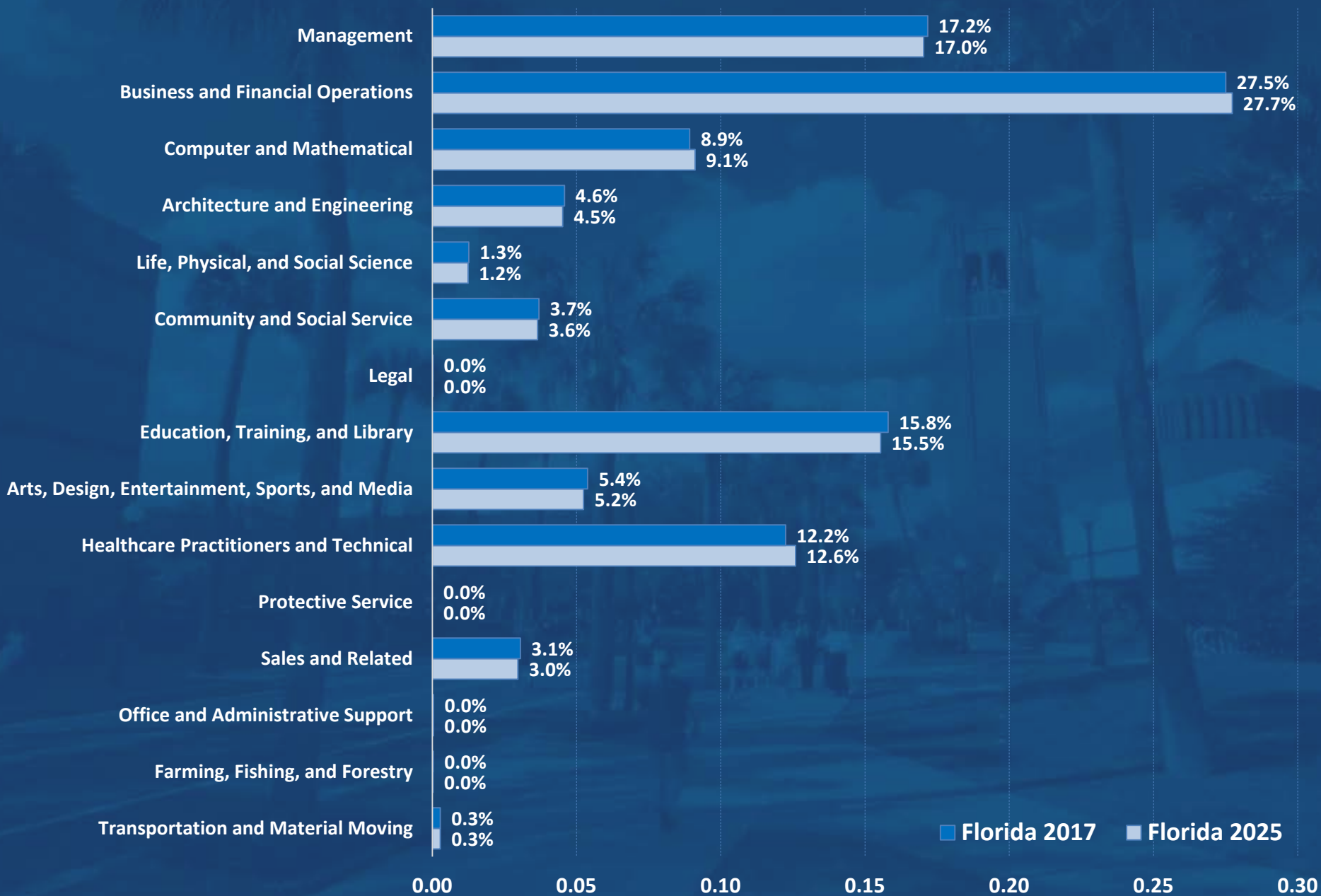
Employment Distribution (FL)



Occupation by major category (Bachelor's degree typically needed)		Florida					
		Employment (thousands)		Change 2017 - 2025		Distribution (%)	
SOC	Title	2017	2025	Total (#)	Rate (%)	2017	2025
	Total	1,714.8	1,932.6	217.8	12.7	100.0	100.0
110000	Management	294.5	329.2	34.7	11.8	17.2	17.0
130000	Business and Financial Operations	471.6	535.9	64.3	13.6	27.5	27.7
150000	Computer and Mathematical	153.0	176.0	23.0	15.1	8.9	9.1
170000	Architecture and Engineering	78.6	87.4	8.8	11.2	4.6	4.5
190000	Life, Physical, and Social Science	21.7	24.0	2.3	10.6	1.3	1.2
210000	Community and Social Service	63.4	70.5	7.2	11.3	3.7	3.6
230000	Legal	0.4	0.5	0.1	16.0	0.0	0.0
250000	Education, Training, and Library	271.0	300.4	29.4	10.9	15.8	15.5
270000	Arts, Design, Entertainment, Sports, and Media	92.4	101.3	8.9	9.7	5.4	5.2
290000	Healthcare Practitioners and Technical	210.0	243.4	33.4	15.9	12.2	12.6
410000	Sales and Related	52.3	57.3	5.0	9.6	3.1	3.0
430000	Office and Administrative Support	0.7	0.8	0.0	4.3	0.0	0.0
450000	Farming, Fishing, and Forestry	0.6	0.5	0.0	-1.1	0.0	0.0
530000	Transportation and Material Moving	4.8	5.4	0.7	14.1	0.3	0.3

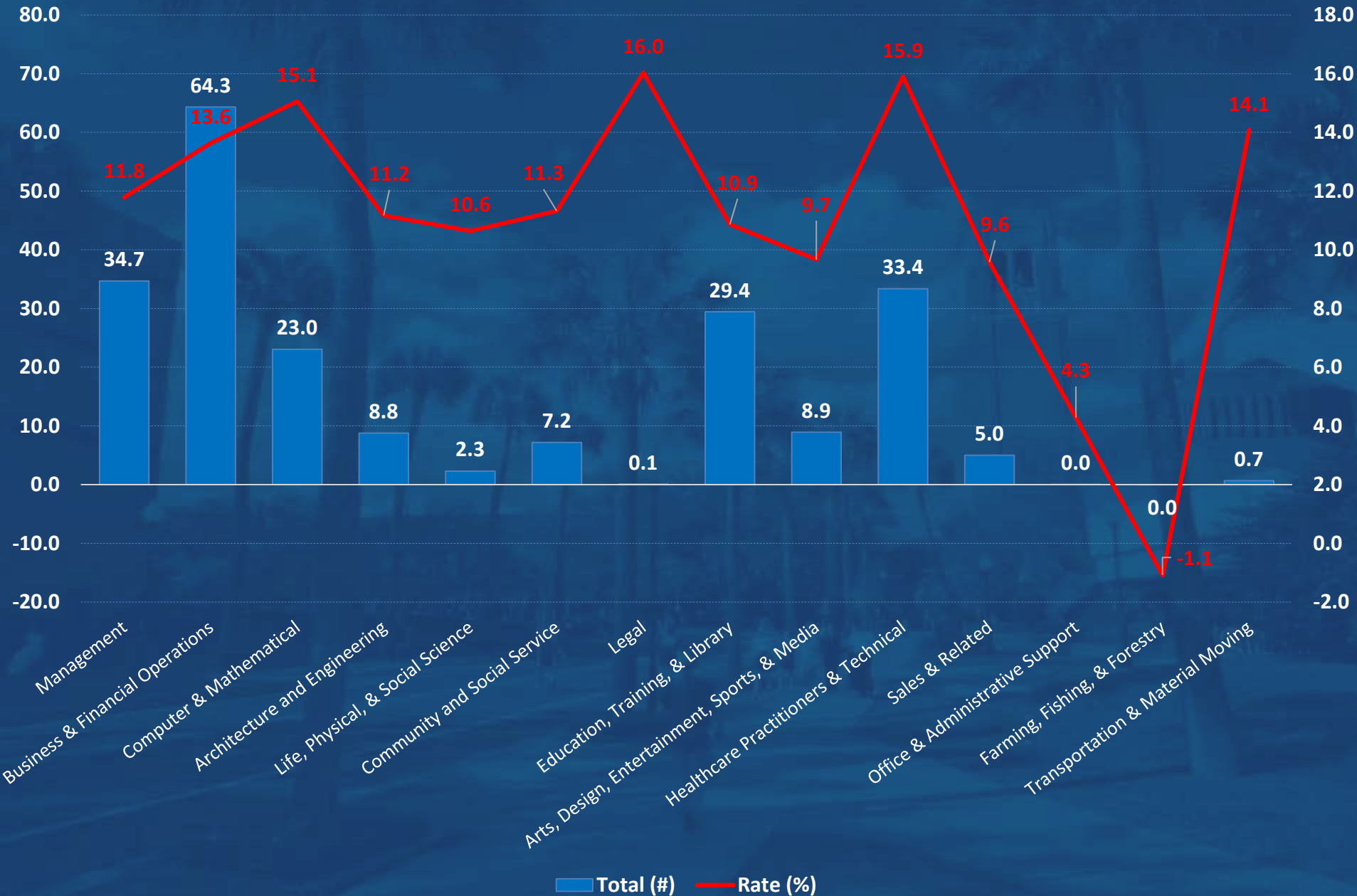
Projected Employment Distribution (Florida)

(Bachelor's degree typically needed)



Employment Change 2017 – 2024 (Florida)

(Bachelor's degree typically needed)



Occupation by major category (Bachelor's degree typically needed)		USA	
		Change 2016 – 2026	
SOC	Title	Total (#)	Rate (%)
		(thousands)	
151132	Software Developers, Applications	255.3	30.7
151122	Information Security Analysts	28.5	28.5
152031	Operations Research Analysts	31.3	27.5
211011	Substance Abuse and Behavioral Disorder Counselors	23.8	23.2
131161	Market Research Analysts and Marketing Specialists	138.3	23.2
299091	Athletic Trainers	6.3	22.7
152011	Actuaries	5.3	22.5
119111	Medical and Health Services Managers	72.1	20.5
211023	Mental Health and Substance Abuse Social Workers	24.0	19.4
171021	Cartographers and Photogrammetrists	2.4	19.0
113031	Financial Managers	108.6	18.7
119151	Social and Community Service Managers	26.5	18.0
273091	Interpreters and Translators	12.1	17.7
274032	Film and Video Editors	5.8	17.0
194092	Forensic Science Technicians	2.6	16.9
172171	Petroleum Engineers	5.1	15.1
132052	Personal Financial Advisors	40.4	14.9
131131	Fundraisers	13.4	14.8
291141	Registered Nurses	438.0	14.8
211091	Health Educators	8.9	14.6

Occupation by major category (Bachelor's degree typically needed)		Florida	
		Change 2017 – 2025	
SOC	Title	Total (#)	Rate (%)
171021	Cartographers and Photogrammetrists	196	33.9
273091	Interpreters and Translators	788	26.5
152031	Operations Research Analysts	1,734	26.1
172031	Biomedical Engineers	172	23.7
132052	Personal Financial Advisors	3,492	23.1
194092	Forensic Science Technicians	353	22.5
131161	Market Research Analysts and Marketing Specialists	6,670	22.5
151121	Computer Systems Analysts	4,225	21.6
299091	Athletic Trainers	275	21.4
151122	Information Security Analysts	998	20.0
151132	Software Developers, Applications	6,960	19.4
211011	Substance Abuse and Behavioral Disorder Counselors	914	18.4
113021	Computer and Information Systems Managers	2,213	18.1
274032	Film and Video Editors	339	17.9
132071	Credit Counselors	616	17.8
273042	Technical Writers	446	17.8
119111	Medical and Health Services Managers	2,345	17.4
131111	Management Analysts	9,835	17.4
299099	Healthcare Practitioners and Technical Workers, All Other	335	17.3
152011	Actuaries	93	17.1